



**WOMEN  
EDUCATION & SOCIAL WELFARE  
VOL. 1 NO. 1 (2024)**

ISSN: 3064-2469

## **Spatial Segregation and Gender-Based Resource Inequality in Urban Areas: Anggun Case Study of Elite Neighborhoods and Surraounding Communities in Indonesia**

**Riska Tri Budiarti<sup>✉</sup>, Irani Diansah<sup>✉</sup> and Nurdini<sup>✉</sup>**

**To cite this article** Tri Budiarti, R., Diansah, I., & Nurdini, N. (2024). Spatial Segregation and Gender-Based Resource Inequality in Urban Areas: Case Study of Elite Neighborhoods and Surrounding Communities in Indonesia. *Women, Education, and Social Welfare*, 1(1), 34–44. <https://doi.org/10.70211/wesw.v1i1.84>

**To link to this article:**



Published online: June 30, 2024



Submit your article to this journal



View crossmark data



# Spatial Segregation and Gender-Based Resource Inequality in Urban Areas: Anggun Case Study of Elite Neighborhoods and Surrounding Communities in Indonesia

Riska Tri Budiarti\*, Irani Diansah and Nurdini.

Received : January 26, 2024

Revised : April 04, 2024

Accepted : May 20, 2024

Online : June 30, 2024

## Abstract

This study explores the impact of spatial segregation on gender-based resource inequality in urban areas of Indonesia. Through interviews, observations, and image analysis in three elite residential areas Bintaro, Kota Baru Parahyangan, and Citra Grand City, the research highlights significant inequalities in income, education, health, and access to basic services between residents of these elite areas and those in surrounding communities. The findings show that men in elite areas have better access to economic resources and job opportunities, while women in nearby communities are often disadvantaged in terms of employment and education. This gender-based inequality is worsened by the privatization of basic services like water and sanitation. The study also notes some benefits of elite area development for surrounding communities, such as improved road access. Overall, the research underscores the need to address spatial segregation and gender inequalities to achieve more inclusive urban development. Policy recommendations focus on reducing inequalities and creating a more equitable urban environment.

**Keywords:** Gender Inequality, Resource Access, Spatial Segregation, Urban Development

## Publisher's Note:

WISE Pendidikan Indonesia stays neutral with regard to jurisdictional claims in published maps and institutional affiliations.



Copyright:

©

2024 by the author(s).

License WISE Pendidikan Indonesia, Bandar Lampung, Indonesia. This article is an open access article distributed under the terms and conditions of the Creative Commons Attribution-ShareAlike (CC BY 4.0) license

(<https://creativecommons.org/licenses/by/4.0/>).



## INTRODUCTION

Over the past two decades, the growth of elite residential areas in urban regions of Indonesia has seen a significant increase. This phenomenon has been driven by various factors, including economic growth, which has led to rising incomes, particularly among the middle class [1]. The development of infrastructure, such as new roads connecting suburban areas to major economic centers, has also contributed to the emergence and expansion of elite residential areas in suburban regions [2]. Additionally, government policies that support the licensing of new land developments, flexible zoning, streamlined permitting processes, and economic incentives for the development of elite residential areas have further accelerated this growth [3]. Furthermore, the availability of more affordable housing finance for formal sector workers in urban areas has increased demand for elite housing, which in turn has driven supply growth in the property market [4].

However, this rapid growth of elite residential areas has also been accompanied by increasing spatial segregation, where elite residential areas become increasingly isolated from non-elite or lower-income communities [5]. These elite residential areas are typically designed with gated systems that restrict access, creating significant physical and social distance between residents inside and outside these areas [6]. Spatial segregation reflects inequalities in the distribution of resources, opportunities, and access to basic services across different geographic areas, often exacerbating social and economic disparities among different social groups, with residents of elite areas tending to have better access to various resources compared to those outside these areas [7].

Moreover, spatial segregation not only creates general social and economic inequalities but also exacerbates gender inequality in the distribution of resources [8]. In elite areas, men often have greater access to economic opportunities and lucrative jobs. They tend to occupy higher positions within the occupational structure, possess wider social networks, and have easier access to economic resources such as capital and business opportunities [9]. Conversely, women, especially those living in communities surrounding elite areas, often face greater barriers in accessing decent employment and equal educational opportunities [10]. This gender inequality is also evident in access to healthcare services, where men in elite areas may find it easier to access premium healthcare services and high-quality education for their children, while women in surrounding communities are often more limited in this regard [11]. Furthermore, women are more vulnerable to the negative impacts of the privatization of basic services, such as clean water and sanitation, which are more readily accessible to male residents of elite areas [12].

To address the issues of spatial segregation and gender inequality, various efforts have been made by the government, non-governmental organizations (NGOs), and local communities [11]. The government, for example, has attempted to implement more inclusive and equitable spatial planning policies aimed at providing more evenly distributed public facilities and basic services across urban areas, regardless of residents' socioeconomic status [13]. Affordable and accessible housing programs have also been promoted for low-income groups and women, in an effort to reduce inequalities in access to decent and safe housing [14].

In addition to government efforts, NGOs and civil society groups have played an active role in advocating for the rights of women and marginalized groups in urban areas [4]. They have implemented economic empowerment programs specifically targeted at women, such as

skills training and support for micro-enterprises [15]. These programs aim to enhance the economic independence of women, particularly those living in communities surrounding elite areas, thereby providing them with better opportunities to access economic resources and improve their quality of life [16]. NGOs also often provide alternative healthcare and education services for urban poor communities that are not reached by public services, with the hope of reducing inequalities in access to basic services [17].

On the other hand, some elite residential developers have begun to pay attention to social aspects in their developments [18]. They have sought to build public facilities that can be accessed by surrounding communities, such as parks, sports centers, and better roads, as part of their corporate social responsibility (CSR) efforts [19]. This approach is expected to reduce the social distance between residents of elite areas and surrounding communities, as well as to improve the quality of life for those living near elite areas [20]. Despite these efforts showing some positive outcomes, significant challenges remain in reducing spatial and gender inequalities in urban areas [21]. Closer collaboration between the government, the private sector, and civil society is required to create more comprehensive and sustainable policies and programs to address these issues [22].

This study aims to identify and analyze the impact of spatial segregation on social, economic, and gender inequalities in urban areas of Indonesia. Specifically, the study seeks to understand how spatial segregation affects the distribution of resources between men and women, and how this gender inequality impacts the daily lives of residents in elite areas and surrounding communities. Furthermore, this research aims to evaluate the efforts that have been made by various stakeholders to address the inequalities resulting from spatial segregation and to provide policy recommendations that can support the creation of more inclusive and equitable urban development. As such, the findings of this study are expected to serve as a foundation for more effective policymaking in reducing inequalities and creating a fairer urban environment for all social strata.

## METHODS

This study employs a descriptive qualitative approach to identify and analyze the impact of spatial segregation on social, economic, and gender inequality in urban areas of Indonesia, with a focus on resource disparities between men and women. The case studies were conducted in three different elite residential areas: Bintaro in South Tangerang, Kota Baru Parahyangan in West Bandung, and Citra Grand City in Palembang. These locations were selected because they represent clear examples of spatial segregation between elite residential areas and surrounding non-elite communities.

The study involves several data collection methods. First, in-depth interviews were conducted with residents of the elite areas and the surrounding communities. These interviews aimed to explore their perceptions of access to economic resources, education, healthcare, and employment opportunities, and how these factors differ between men and women. Informants were selected purposively to ensure representation from various demographic groups, including differences in gender and socioeconomic status. Second, direct observation was carried out at each study location to observe the physical and social conditions in the elite areas and the surrounding communities. This observation included examining the accessibility of public facilities, the state of infrastructure, and the social interactions between residents of the

two types of residential areas. Additionally, visual analysis was conducted on images obtained both directly and through satellite imagery to understand the spatial and physical patterns reflecting spatial segregation. Third, secondary data was used to complement the findings from interviews and observations. This data included demographic, economic, and educational information from various sources, such as government reports, academic publications, and public databases. The secondary data was analyzed to identify trends and patterns of gender-based inequality occurring in the elite areas and the surrounding communities.

Data analysis was performed using a thematic approach, in which the data obtained from interviews, observations, and secondary sources were grouped based on key themes relevant to the research objectives. These themes included access to economic resources, the role of gender in resource distribution, and the impact of spatial segregation on social and economic inequality. This analysis enabled the researchers to identify significant differences between men and women in terms of access to and distribution of resources in the study areas. The results of this study are expected to provide a deeper understanding of how spatial segregation exacerbates gender-based inequality in urban areas and to offer policy recommendations that can help reduce these inequalities and promote more inclusive and equitable urban development.

**Table 1.** Research Flow

No.	Research Phase	Main Activities	Data Collection Methods	Purpose
1	Site Selection	Selection of three elite residential areas and surrounding communities as case studies.	Literature review and preliminary observation	To identify locations representing cases of spatial segregation.
2	Interviews	In-depth interviews with residents of elite areas and surrounding communities.	Semi-structured interviews	To explore perceptions of resource access and gender-based inequality.
3	Field Observation	Direct observation of physical and social conditions at the study sites.	Participatory and non-participatory observation	To observe the accessibility of public facilities and social interactions.
4	Visual Analysis	Analysis of images from study sites, including satellite imagery.	Visual and spatial analysis	To understand the spatial and physical patterns reflecting segregation.
5	Secondary Data Collection	Collection of demographic, economic, and educational data from secondary sources.	Literature review and secondary data analysis	To complement findings from interviews and observations.
6	Data Analysis	Thematic grouping of data and thematic analysis.	Thematic analysis	To identify significant differences in resource access and distribution.
7	Report Writing	Preparation of the research findings and policy recommendations.	Report writing	To present research findings and policy recommendations.

## RESULT AND DISCUSSION

This study reveals that spatial segregation in urban areas of Indonesia not only creates significant social and economic disparities between residents of elite neighborhoods and surrounding communities but also exacerbates gender-based resource inequalities. Based on interviews and observations conducted in three elite residential locations Bintaro, Kota Baru Parahyangan, and Citra Grand City Palembang it was found that access to economic, educational, health, and other basic services is heavily influenced by gender, with men in elite areas enjoying greater advantages compared to women, especially those in surrounding communities.

### 1. Economic Resource Inequality

The study reveals that economic resource inequality between men and women is markedly pronounced in elite residential areas compared to surrounding communities. In elite neighborhoods, men tend to dominate access to high-paying jobs and lucrative

economic opportunities. They often hold senior positions in the workplace, which allows them to leverage broader social networks, secure promotions, and negotiate better salaries and benefits [23]. This is not only due to the existing opportunities within these elite environments but also because of the social expectations and structures that favor male participation in the formal economy over female participation.

In contrast, women in surrounding communities face substantial barriers to accessing similar economic opportunities. These barriers include limited access to quality education and vocational training, lack of childcare services that would allow them to pursue full-time employment, and societal norms that prioritize men's economic roles over women's. Even when women do participate in the workforce, they are often confined to low-paying jobs or informal sectors with little to no job security, benefits, or opportunities for advancement [16]. This economic marginalization perpetuates a cycle of dependency, where women remain financially dependent on male family members, limiting their economic mobility and reinforcing the gender gap.

The economic inequality is further compounded by the disparity in access to financial services. Women in surrounding communities often lack access to credit or capital necessary to start their own businesses or invest in economic activities [24]. Financial institutions may be less accessible or may impose higher barriers to entry for women, such as stringent collateral requirements that women, particularly those in lower-income brackets, are less likely to meet. This lack of access to financial resources further entrenches economic disparities, leaving women in surrounding communities economically vulnerable and limiting their capacity to improve their socioeconomic status.

## **2. Educational Access Inequality**

Educational disparities between residents of elite areas and surrounding communities are also significant and contribute to long-term gender inequality [25]. In elite neighborhoods, families are more likely to send their children to private schools with superior facilities, better-qualified teachers, and a more comprehensive curriculum that often includes extracurricular activities designed to develop a wide range of skills. These private schools are typically well-funded and can provide students with an environment conducive to high academic achievement and personal development, which are critical for success in higher education and the job market [26]. Boys from these elite families benefit disproportionately from this educational advantage. They are often encouraged to pursue prestigious careers and are provided with the resources and support necessary to achieve these goals. The emphasis on educational attainment among boys in elite areas is closely tied to the expectation that they will continue the family's socioeconomic status, taking on leadership roles in business, politics, or other influential sectors. As a result, boys from elite areas are more likely to attend elite universities and secure high-paying jobs, perpetuating the cycle of privilege.

On the other hand, girls from elite families, while also receiving high-quality education, may still face societal pressures that emphasize traditional gender roles, such as prioritizing family responsibilities over career ambitions. However, they are generally better positioned than their counterparts in surrounding communities due to the resources available to them. In contrast, children in surrounding communities, particularly girls, often attend public schools that are underfunded and lack the resources necessary to provide a high-quality

education. These schools may have larger class sizes, fewer extracurricular activities, and less access to modern technology or teaching aids, which can significantly hinder students' academic performance. Girls in these communities may also face additional challenges, such as cultural norms that prioritize boys' education over girls', or responsibilities at home that limit their ability to focus on their studies. As a result, girls from these communities are less likely to pursue higher education and are often tracked into vocational training or low-skilled jobs, perpetuating gender and economic disparities.

The gap in educational access is not just about the quality of education received but also about the opportunities that education can provide [24]. Boys from elite areas are more likely to have access to educational networks, mentorship, and internships that can lead to career opportunities, while girls from surrounding communities may not have the same access to these critical resources. This educational divide contributes to a cycle where gender-based disparities are reproduced across generations, with boys from elite areas maintaining or even enhancing their socioeconomic status, while girls from surrounding communities remain disadvantaged.

This inequality in educational access and outcomes has long-term implications for both individuals and communities [27]. Without access to quality education, women in surrounding communities are less likely to break out of cycles of poverty and are more likely to remain in low-paying jobs with limited opportunities for advancement. This not only impacts their economic independence but also their ability to participate fully in society, including in leadership roles or decision-making processes that could influence policies affecting their communities.

The disparity in educational opportunities between elite areas and surrounding communities also has a broader societal impact, as it reinforces social stratification and limits social mobility. As boys from elite areas continue to dominate higher education and high-paying jobs, the gap between the rich and the poor widens, and social divisions become more entrenched. This can lead to increased social tensions and reduced social cohesion, making it more challenging to address systemic inequalities and promote social justice.

### **3. Healthcare Access Inequality**

Regarding healthcare services, residents of elite areas have better access, including premium health insurance and easy access to high-quality private healthcare facilities [24]. In contrast, women in surrounding communities often have to rely on limited and inadequate government healthcare facilities. This increases health risks for women, particularly in terms of reproductive health and child care, ultimately impacting their overall quality of life. Women who experience serious health issues often cannot access the necessary care, which can worsen their conditions and limit their ability to fully participate in economic and social life [27].

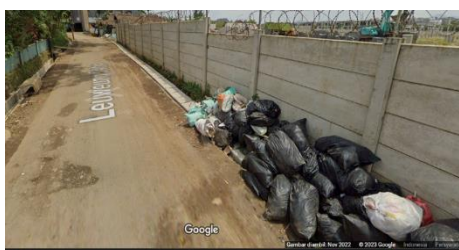
### **4. Expenditure and Impact of Basic Service Privatization**

The study also finds significant differences in expenditures for education, energy, and healthcare needs. Residents of elite areas mostly use cars, while residents in surrounding communities use motorcycles. The use of energy, whether fuel or electricity, is closely related to the mode of transportation and devices used. Since residents of elite areas predominantly use cars, their fuel consumption is much higher than that of residents in

surrounding communities who use motorcycles. A similar situation occurs with electricity consumption, where the power capacity and devices used by residents of elite areas are larger, leading to higher electricity usage [23]. For gas consumption, although relatively similar, the expenditure differs because residents in surrounding communities mostly use subsidized gas cylinders, while residents of elite areas use non-subsidized gas cylinders.

Furthermore, the privatization of basic services such as water and sanitation also exacerbates these inequalities [28]. Although access to clean water is generally similar, whether through boreholes, the municipal water company (PDAM), or private water service providers, high costs are often a complaint from households in both elite residential areas and surrounding communities. The privatization of waste management presents even deeper challenges. In elite areas, waste management services are often integrated with security services and other services, so residents are required to pay a monthly fee covering all these services [21]. This system ensures that waste from elite areas is well managed, regularly collected, and disposed of in official and safe landfills.

In contrast, in the communities surrounding elite areas, waste management is not always regular and depends on individual households' willingness to subscribe to waste collection services. Since there is no obligation to subscribe, many households in surrounding communities choose not to pay for these services. As a result, waste is often disposed of indiscriminately, such as in vacant lots or along quiet roadsides. This not only creates serious environmental problems but also leads to conflicts between residents of surrounding communities and the management of elite areas. For example, in Citra Grand City (CGC) Palembang, vacant lots that have not yet been developed become targets for illegal waste disposal by residents of surrounding communities. Similar conflicts occur in Kota Baru Parahyangan, where waste piles up along the boundary wall between the elite area and the surrounding environment, as seen in Figure 1. This phenomenon shows that the privatization of basic services, without clear regulation and a fair system, can exacerbate inequalities and create social tensions.



**Figure 1.** Piles of Garbage Along the Boundary Wall of Kota Baru Parahyangan



**Figure 2.** Road Conditions in Kota Baru Parahyangan Accessible to the Public



**Figure 3.** Road Conditions in the Citra Grand Palembang Complex with Public Access



**Figure 4.** Road Conditions Leading to the Menteng Residence Complex in Bintaro Accessible to the Public

In addition to environmental issues and social conflicts, this situation also illustrates that the privatization of basic services tends to benefit economically advantaged groups, while poorer groups, such as residents in communities surrounding elite areas, bear the additional burden due to lack of adequate access to basic services. This condition worsens the existing social and economic inequalities, and in the context of gender, the burden of managing waste and household cleanliness often falls on women, who must spend more time and energy managing these situations, thus reducing the time available for other productive activities.

## 5. Social and Gender Implications

*The social implications of this spatial segregation are highly complex.* The inequalities that occur not only affect access to material resources such as income, education, and healthcare but also reinforce existing social stratification, deepening social distances between different groups in society. Segregated communities tend to have more exclusive views and are more likely to reinforce negative stereotypes against other groups of different socioeconomic status. This can lead to a reduction in social solidarity and an increase in social tensions within urban communities.

These social impacts also have significant gender dimensions. Inequalities in access to resources reinforce traditional gender roles where men are seen as the primary breadwinners, while women are confined to domestic roles [8]. Spatial segregation, with limited access to public services and economic opportunities, hinders women from fully participating in social and economic life. Additionally, these inequalities reduce women's opportunities to achieve leadership positions or be involved in decision-making processes that could influence their communities. In the long term, the implications of gender-based inequality exacerbated by spatial segregation can impact sustainable development [18]. When half the population, namely women, does not have equal access to resources, education, and healthcare, the economic and social potential of a country cannot be maximized. This can slow economic growth, increase dependence on social assistance, and worsen the overall quality of life in society.

*Strengths and Weaknesses of the Research.* This study has several significant strengths. First, it employs an in-depth case study approach in three different locations, namely Bintaro, Kota Baru Parahyangan, and Citra Grand City Palembang, allowing the researchers to identify and understand in detail how spatial segregation and gender-based resource inequality occur in various urban contexts in Indonesia. Through an in-depth qualitative approach, this study successfully explores the perceptions and experiences of the research subjects directly, providing richer and deeper insights into the impact of spatial segregation on social, economic, and gender inequalities. Additionally, this study also integrates data from various sources, including interviews, field observations, and secondary data analysis, which strengthens the validity of the findings and offers a more comprehensive picture of the issues studied.

However, this study also has several limitations that must be acknowledged. One major limitation is the generalization of the findings. Since this research was conducted in three specific study locations, the results may not fully represent the conditions in all urban areas in Indonesia. Each area has unique characteristics that may influence the level of spatial segregation and gender inequality, making the findings of this study more relevant as case

studies rather than as representations of national conditions. Additionally, the qualitative approach used in this study, while rich in detail, has limitations in quantitatively measuring the impact of spatial segregation and gender inequality. For example, this study does not explicitly measure the extent of spatial segregation's impact on income or education statistically, which may be necessary to strengthen these findings in a broader context.

***Policy Recommendations*** Based on these findings, it is essential to develop more inclusive and equitable policies in urban spatial planning and the provision of basic services. The government needs to pay attention to the impact of spatial segregation on gender inequality and ensure that women, particularly in communities surrounding elite areas, have equal access to economic, educational, and healthcare resources. Moreover, efforts to improve infrastructure access and basic services in surrounding communities also need to be strengthened to reduce the negative impacts of this spatial segregation.

## CONCLUSION

This study demonstrates that spatial segregation in urban areas of Indonesia has a significant impact on social, economic, and gender inequality. In this context, men in elite areas tend to have greater access to economic opportunities, education, and healthcare services compared to women, particularly those living in surrounding communities. This inequality is exacerbated by the privatization of basic services, such as water and sanitation, which are more easily accessible to residents of elite areas than to those in surrounding communities. The impact of spatial segregation extends beyond differences in access to resources, deepening the social divide between different groups in society. The gender inequality worsened by spatial segregation creates greater barriers for women to fully participate in social and economic life, reinforcing traditional gender roles that limit their potential. Although this study has limitations in terms of generalizability and quantitative approach, its contribution to understanding the impact of spatial segregation on gender inequality in Indonesia is invaluable. The findings provide a strong foundation for the development of more inclusive and equitable policies in urban planning. Policies must consider gender perspectives, enhance women's access to economic opportunities, and ensure the provision of basic services that are fair to all segments of society. In doing so, more inclusive and sustainable urban development can be achieved, creating a more equitable and harmonious urban environment for all.

## AUTHORS INFORMATION

### *Corresponding Authors*

**Riskha Tri Budiarti** – Department of Islamic Economy, STIES Alifa Pringsewu, Lampung (Indonesia);

Email: [riskatribudiarti@alifa.ac.id](mailto:riskatribudiarti@alifa.ac.id)

### *Authors*

**Riskha Tri Budiarti** – Department of Islamic Economy, STIES Alifa Pringsewu, Lampung (Indonesia);

Email: [riskatribudiarti@alifa.ac.id](mailto:riskatribudiarti@alifa.ac.id)

**Irani Diansah** – Department of Physics Education, Intitut Agama Islam Darul Amal, Lampung (Indonesia);

Email: [iranidiansah80@gmail.com](mailto:iranidiansah80@gmail.com)

**Nurdini** – Department of Physics Education, Faculty of Mathematics and Science Education, Universitas Pendidikan Indonesia, Bandung (Indonesia).

Email: [nurdini@upi.edu](mailto:nurdini@upi.edu)

### CONFLICT OF INTEREST

"The authors declare no conflict of interest."

### REFERENCES

- [1] Y. Liao, J. Gil, S. Yeh, R. H. M. Pereira, and L. Alessandretti, "Socio-spatial segregation and human mobility: A review of empirical evidence," 2024. <https://doi.org/10.1016/j.compenvurbsys.2025.102250>
- [2] T. C. Yang, K. Park, and S. A. Matthews, "Racial/ethnic segregation and health disparities: Future directions and opportunities," *Sociol. Compass*, vol. 14, no. 6, 2020. <https://doi.org/10.1111/soc4.12794>
- [3] F. L. Cooke and C. Zhao, "Towards a broader understanding of workplace inequality and exclusion in China: a review of discrimination based on social class, gender and physical ability," *Asia Pacific J. Hum. Resour.*, vol. 59, no. 2, pp. 184–203, 2021. <https://doi.org/10.1111/1744-7941.12276>
- [4] J. Nijman and Y. D. Wei, "Urban inequalities in the 21st century economy," *Appl. Geogr.*, vol. 117, no. March, p. 102188, 2020. <https://doi.org/10.1016/j.apgeog.2020.102188>
- [5] W. Scholz and M. Fink, *Green Jobs in Cities: Challenges and Opportunities in African and Asian Intermediary Cities*, no. 7. 2022.
- [6] J. Qi, S. Mazumdar, and A. C. Vasconcelos, *Understanding the Relationship between Urban Public Space and Social Cohesion: A Systematic Review*, vol. 7, no. 2. Springer International Publishing, 2024. <https://doi.org/10.1007/s42413-024-00204-5>
- [7] G. Østby, H. Urdal, and K. Dupuy, "Does Education Lead to Pacification? A Systematic Review of Statistical Studies on Education and Political Violence," *Rev. Educ. Res.*, vol. 89, no. 1, pp. 46–92, 2019. <https://doi.org/10.3102/0034654318800236>
- [8] E. Segerstedt and L. Abrahamsson, "Diversity of livelihoods and social sustainability in established mining communities," *Extr. Ind. Soc.*, vol. 6, no. 2, pp. 610–619, 2019. <https://doi.org/10.1016/j.exis.2019.03.008>
- [9] R. L. Jewett, S. M. Mah, N. Howell, and M. M. Larsen, "Social Cohesion and Community Resilience During COVID-19 and Pandemics: A Rapid Scoping Review to Inform the United Nations Research Roadmap for COVID-19 Recovery," *Int. J. Heal. Serv.*, vol. 51, no. 3, pp. 325–336, 2021. <https://doi.org/10.1177/0020731421997092>
- [10] A. Pueyo and M. Maestre, "Linking energy access, gender and poverty: A review of the literature on productive uses of energy," *Energy Res. Soc. Sci.*, vol. 53, no. June 2018, pp. 170–181, 2019. <https://doi.org/10.1016/j.erss.2019.02.019>
- [11] H. Jabeen, "Gender-Responsive Urban Planning and Design of Public Open Spaces for Social and Economic Equity: Challenges and Opportunities in Dhaka City, Bangladesh," *Glob. J. Human-Social Sci. E Econ.*, vol. 20, no. 5, 2020.
- [12] B. Agarwal, "Gender equality, food security and the sustainable development goals," *Curr. Opin. Environ. Sustain.*, vol. 34, pp. 26–32, 2018. <https://doi.org/10.1016/j.cosust.2018.07.002>
- [13] X. Yue *et al.*, "Research Progress and Trends in Urban Residential Segregation," *Buildings*, vol. 14, no. 7, p. 1962, 2024. <https://doi.org/10.3390/buildings14071962>

- [14] E. E. Toolis, “Restoring the balance between people, places, and profits: A psychosocial analysis of uneven community development and the case for placemaking processes,” *Sustain.*, vol. 13, no. 13, 2021. <https://doi.org/10.3390/su13137256>
- [15] S. Klasen, “The Impact of Gender Inequality on Economic Performance in Developing Countries,” *Annu. Rev. Resour. Econ.*, vol. 10, no. April, pp. 279–298, 2018. <https://doi.org/10.1146/annurev-resource-100517-023429>
- [16] M. Santos Silva and S. Klasen, “Gender inequality as a barrier to economic growth: a review of the theoretical literature,” *Rev. Econ. Househ.*, vol. 19, no. 3, pp. 581–614, 2021. <https://doi.org/10.1007/s11150-020-09535-6>
- [17] S. Hillesund *et al.*, “Horizontal inequality and armed conflict: a comprehensive literature review,” *Can. J. Dev. Stud.*, vol. 39, no. 4, pp. 463–480, 2018. <https://doi.org/10.1080/02255189.2018.1517641>
- [18] S. Keim-Klärner *et al.*, “Social inequality, social networks, and health: a scoping review of research on health inequalities from a social network perspective,” *Int. J. Equity Health*, vol. 22, no. 1, pp. 1–16, 2023. <https://doi.org/10.1186/s12939-023-01876-9>
- [19] J. Whitehead, A. L. Pearson, R. Lawrenson, and P. Atatoa-Carr, “How can the spatial equity of health services be defined and measured? A systematic review of spatial equity definitions and methods,” *J. Heal. Serv. Res. Policy*, vol. 24, no. 4, pp. 270–278, 2019. <https://doi.org/10.1177/1355819619837292>
- [20] K. Mdingi and S. Y. Ho, “Literature review on income inequality and economic growth,” *MethodsX*, vol. 8, no. May, p. 101402, 2021. <https://doi.org/10.1016/j.mex.2021.101402>
- [21] R. Mezzina, V. Gopikumar, J. Jenkins, B. Saraceno, and S. P. Sashidharan, “Social Vulnerability and Mental Health Inequalities in the ‘Syndemic’: Call for Action,” *Front. Psychiatry*, vol. 13, no. May, 2022. <https://doi.org/10.3389/fpsyt.2022.894370>
- [22] H. Bapuji, G. Ertug, and J. D. Shaw, “Organizations and Societal Economic Inequality: A Review and Way Forward Academy of Management Annals Organizations And Societal Economic Inequality: A Review And Way Forward,” 2018.
- [23] J. Chukwuemeka, C. C. Nweke, and O. J. Igweike, “The Privatization of Public Services : A Review of Economic Efficiency and Political Consequences in Africa,” vol. 10, no. 1, pp. 73–86, 2024.
- [24] A. S. Browman, M. Destin, M. S. Kearney, and P. B. Levine, “How economic inequality shapes mobility expectations and behaviour in disadvantaged youth,” *Nat. Hum. Behav.*, vol. 3, no. 3, pp. 214–220, 2019. <https://doi.org/10.1038/s41562-018-0523-0>
- [25] C. Vandekinderen, G. Roets, H. Van Keer, and R. Roose, “Tackling social inequality and exclusion in education: from human capital to capabilities,” *Int. J. Incl. Educ.*, vol. 22, no. 1, pp. 1–20, 2018. <https://doi.org/10.1080/13603116.2017.1362044>
- [26] J. Kafka, “Inequality in Education,” *[Oxford] Handb. Hist. Educ.*, pp. 333–354, 2019. <https://doi.org/10.1093/oxfordhb/9780199340033.013.19>
- [27] P. O’Connor, “Why is it so difficult to reduce gender inequality in male-dominated higher educational organizations? A feminist institutional perspective,” *Interdiscip. Sci. Rev.*, vol. 45, no. 2, pp. 207–228, 2020. <https://doi.org/10.1080/03080188.2020.1737903>
- [28] S. Estrin and A. Pelletier, “Privatization in developing countries: What are the lessons of recent experience?,” *World Bank Res. Obs.*, vol. 33, no. 1, pp. 65–102, 2018. <https://doi.org/10.1093/wbro/lkx007>